



Technical Documentation

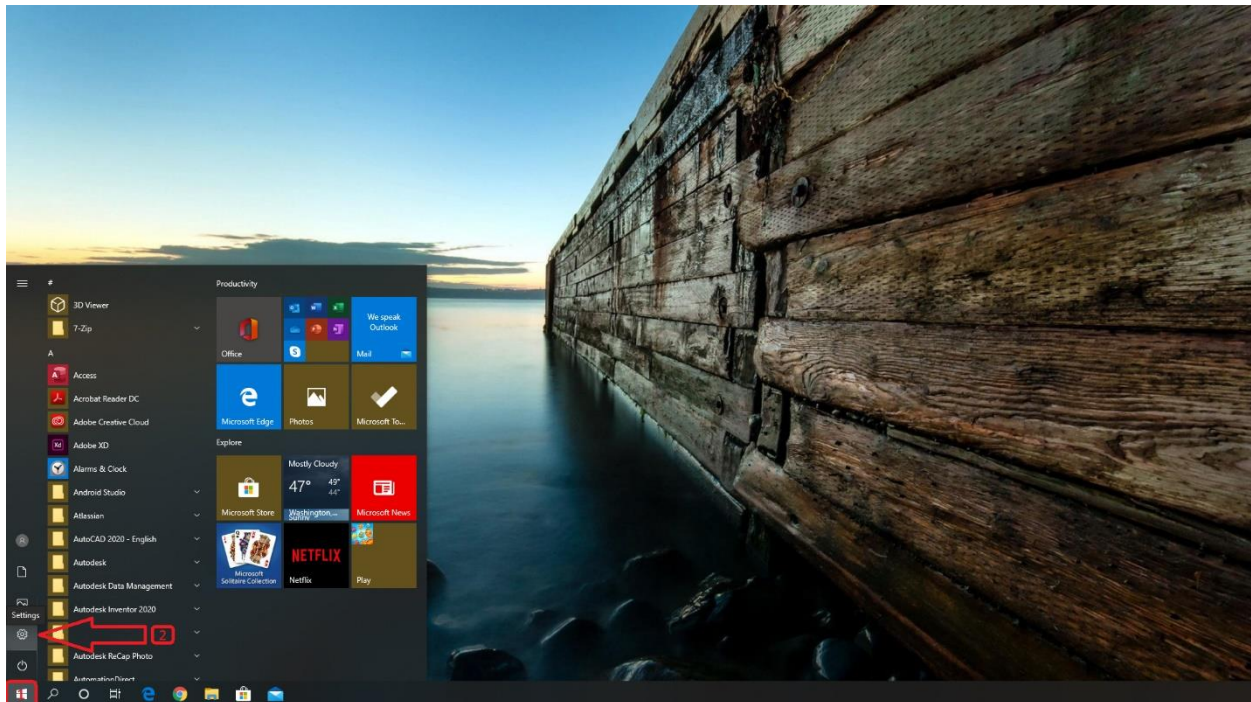
Ethernet Connection Instructions – Windows 10

Fixed IP Address Method - (03/26/2020)

These instructions will setup your computer's ethernet port to be on the same IP Address Subnet xxx.xxx.11.xxx as the CRE controllers, once you have completed everything you intend to do to the controller, please undo the changes made to your ethernet port configuration so your computer will properly operate on a standard internet connection (i.e. not plugging into a CRE controller, but plugging into an office ethernet network).

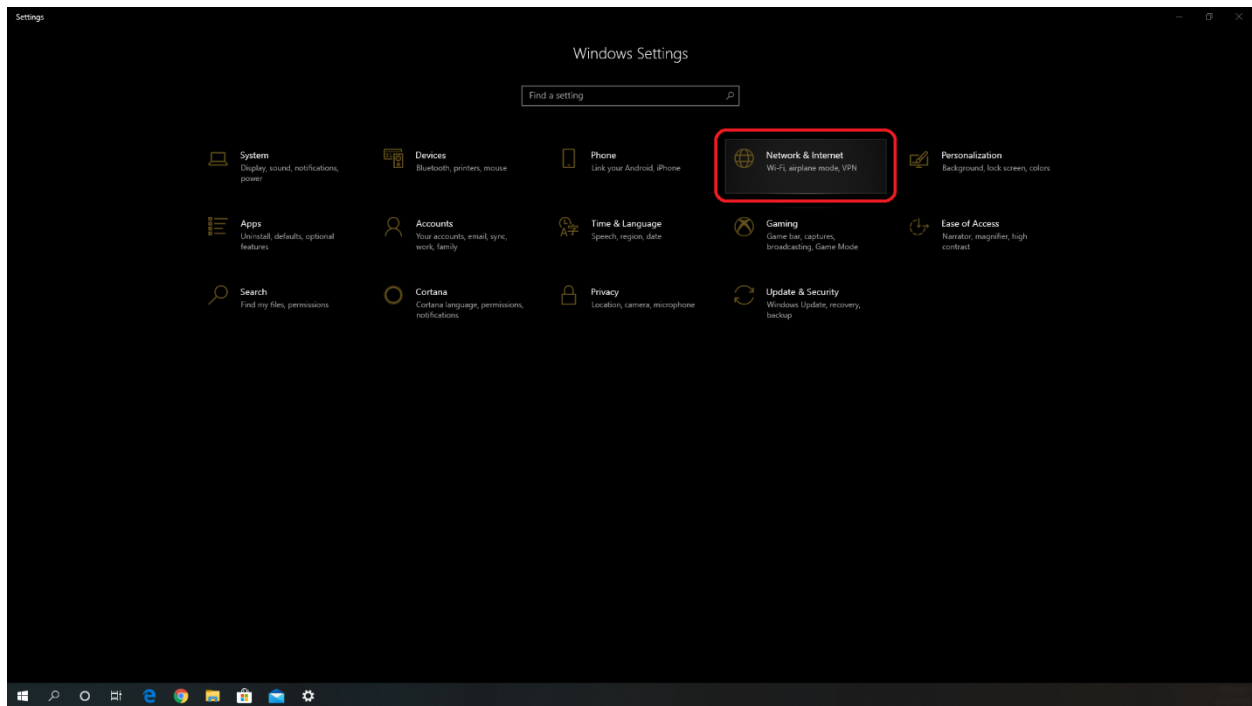
Step 1:

Go to the "Start Menu" typically located in the bottom right hand corner and then "Settings" (the gear icon).



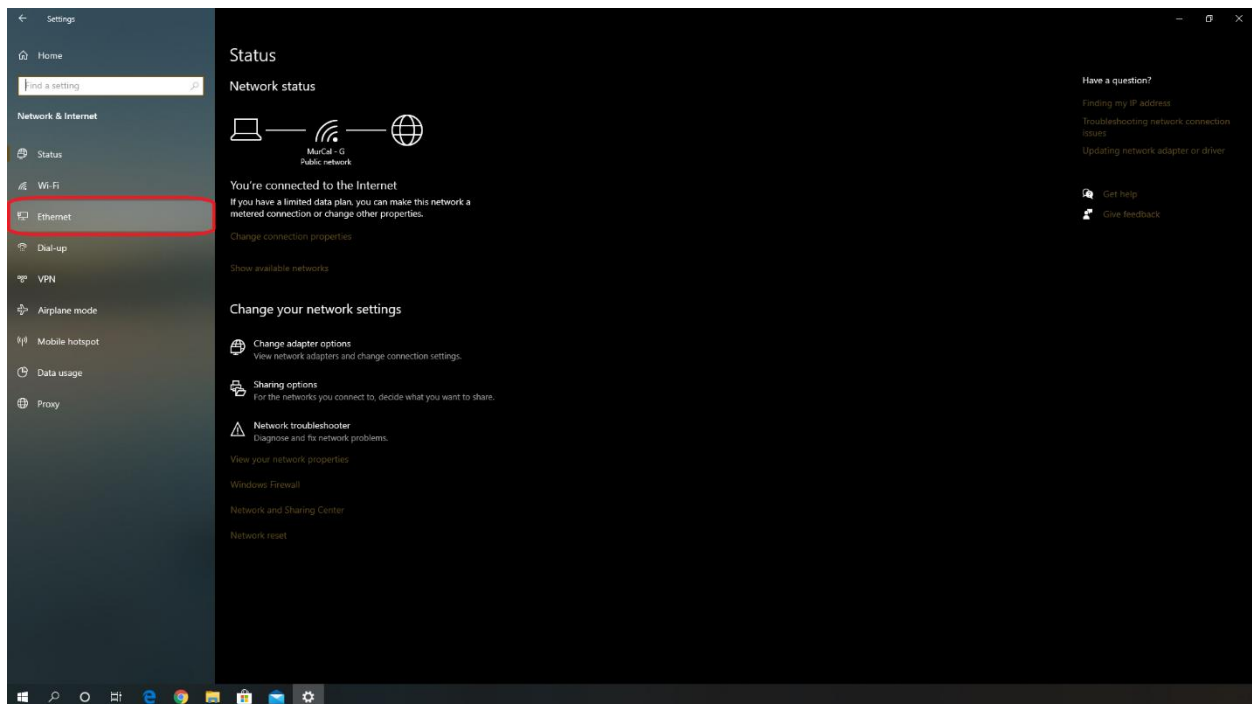
Step 2:

Select “Network & Internet”



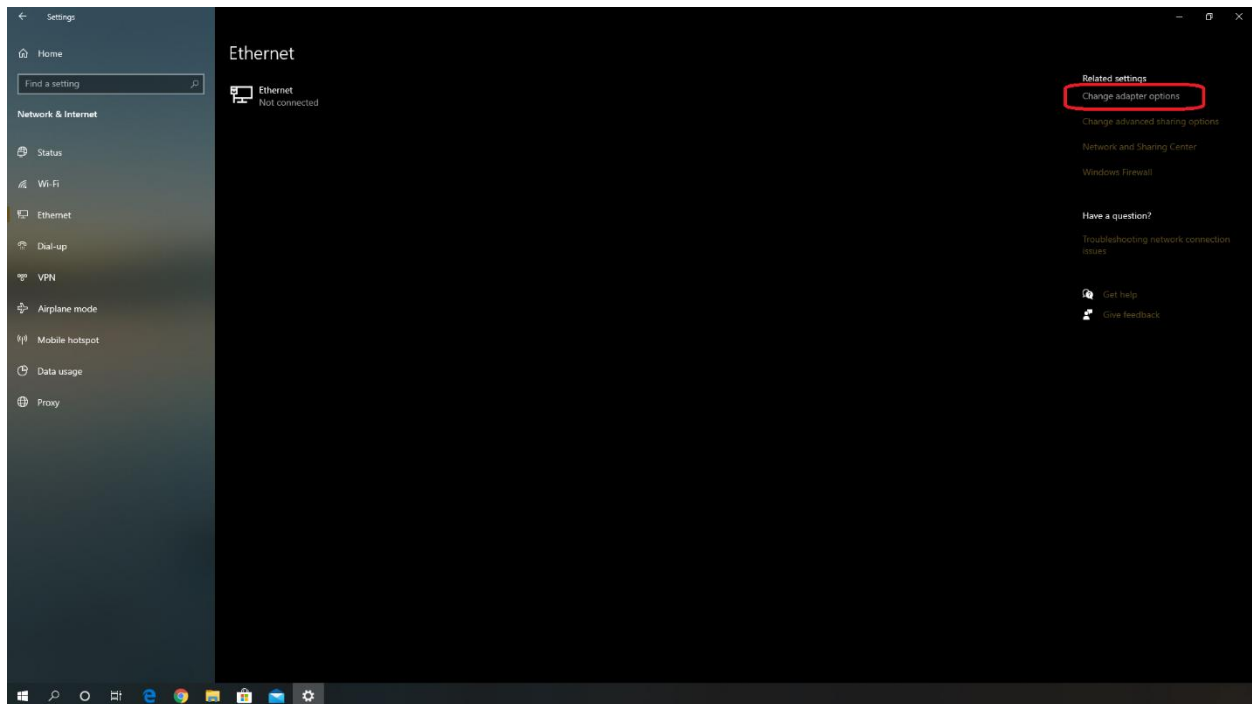
Step 3:

Select “Ethernet” via the menu on the left-hand side.



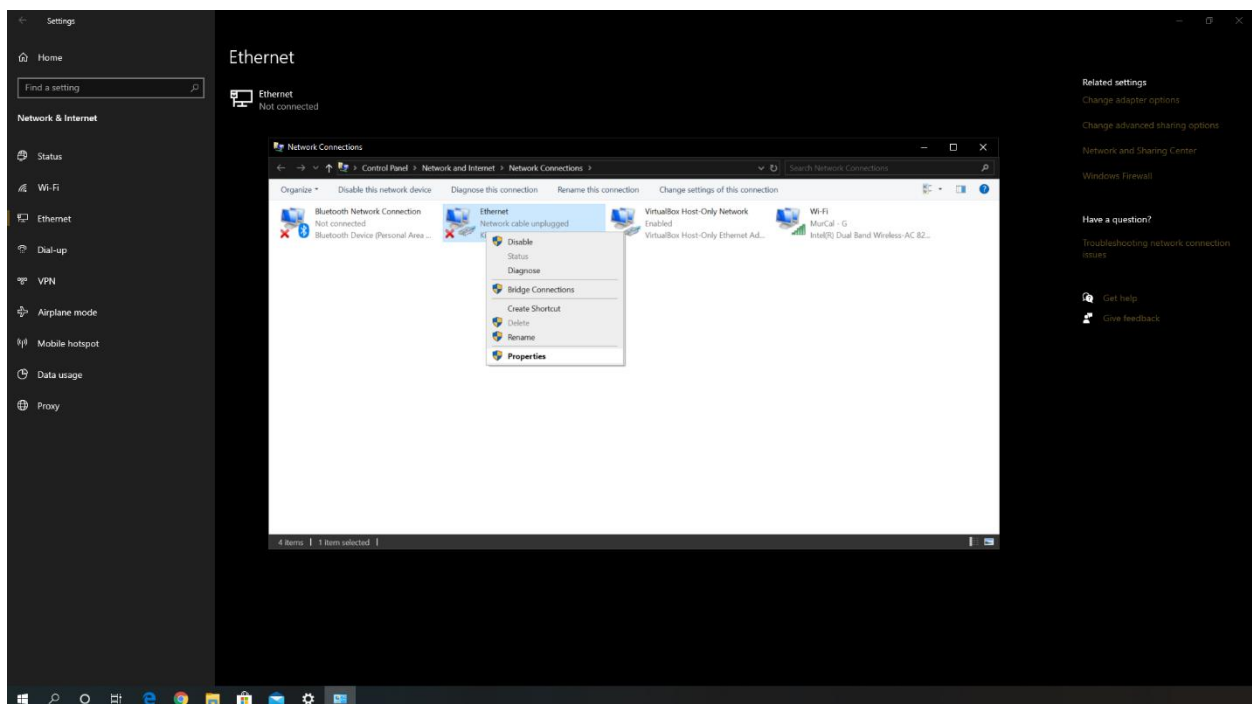
Step 4:

Select “Change Adapter Options” via the menu on the right-hand side



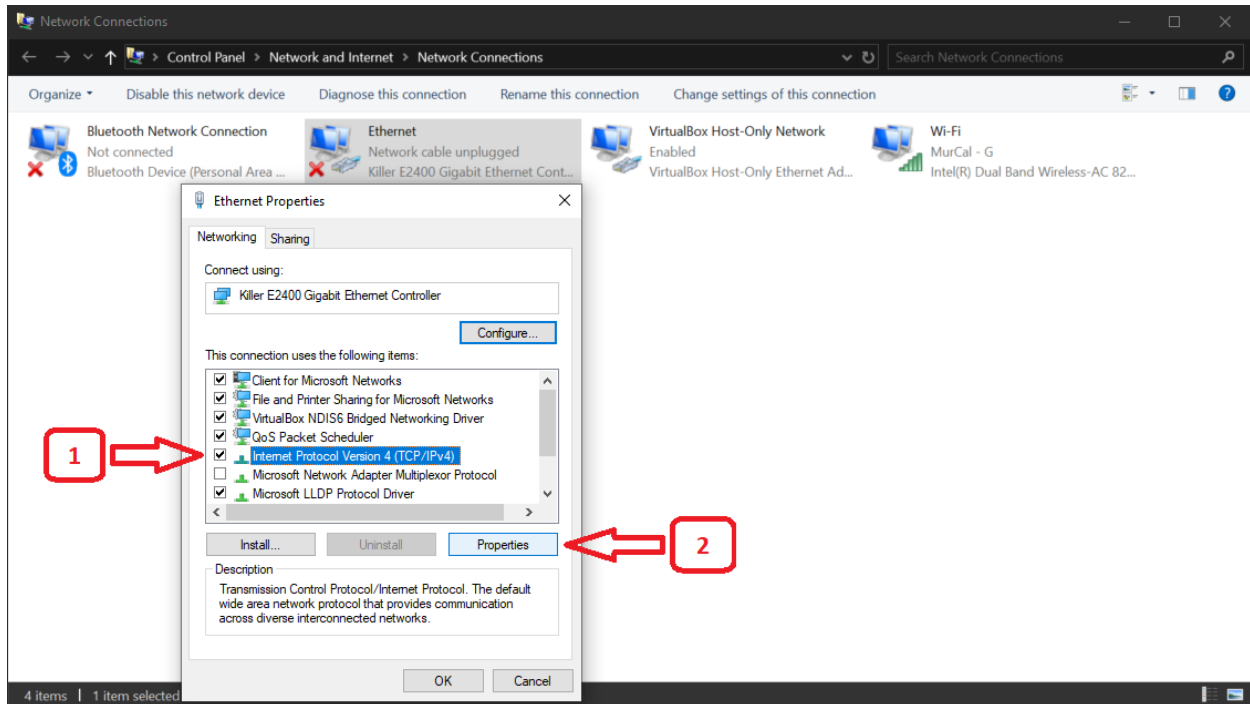
Step 5:

Find the appropriate network adapter – typically called Ethernet – Right click on it and select properties



Step 6:

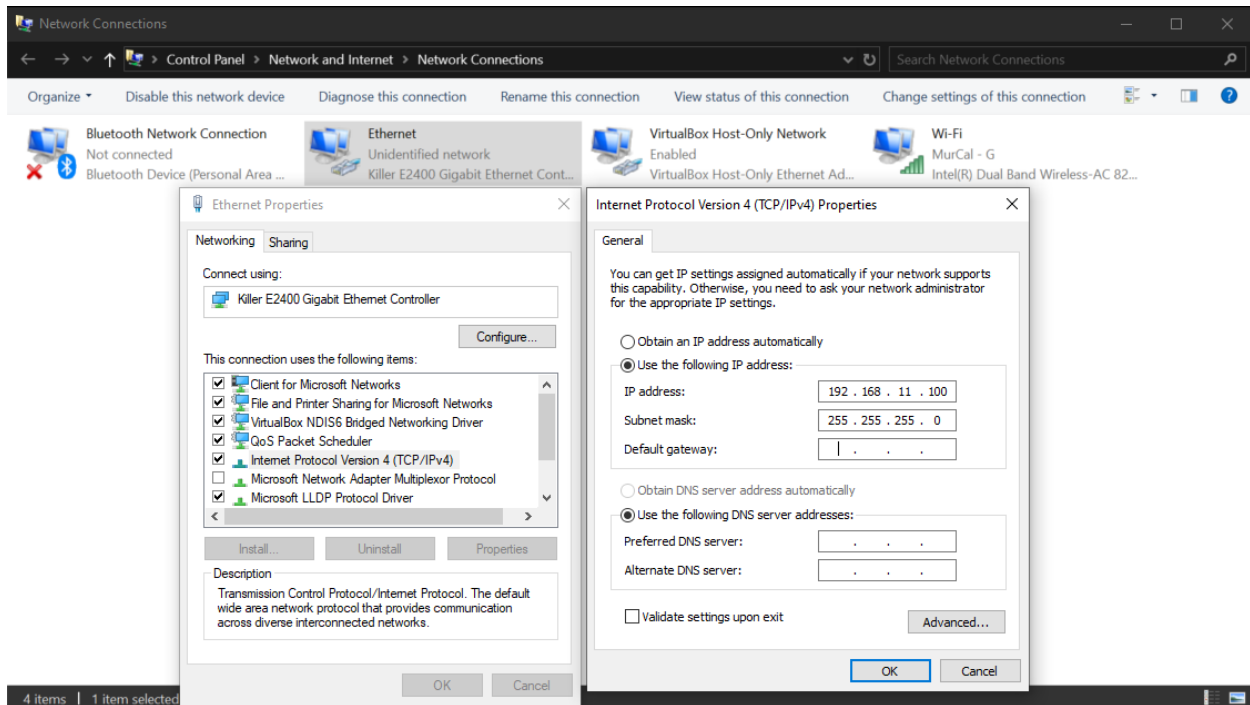
Under the “Networking” tab find the entry called “Internet Protocol Version 4 (TCP/IPv4)”, make sure it’s checked (enabled by default typically), select that row, and click the “Properties” button.



Step 7:

Under the “Internet Protocol Version 4 (TCP/IPv4) Properties” window that pops up, select the radio button called “Use the following IP Address” and enter an IP address of 192.168.11.100 with a Subnet mask of 255.255.255.0. Once those settings have been entered, click OK to close the current window, then OK again to close the “Ethernet Properties” window and close the “Settings” dialog box as well.

You are now ready to connect to your controller via the i4Gen Software Suite!



Step 8:

Once your done with the CRE Controller and i4Gen Software Suite, we **highly** recommend you set your computer’s ethernet port back to factory defaults, repeat steps 1 – 6 again, and in step 7 select the radio button called “Obtain an IP address automatically” and click OK.